



1. Unpack the luminaire.



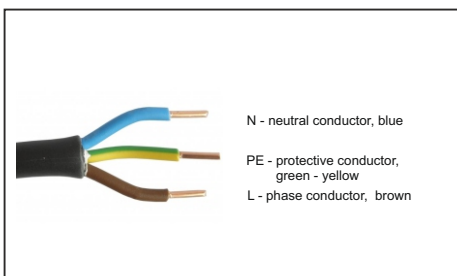
2a. Prepare the luminaire for the installation.  
With a connector gesis.



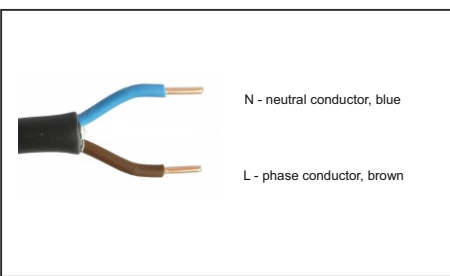
2a. Prepare the luminaire for the installation.  
With a cable.



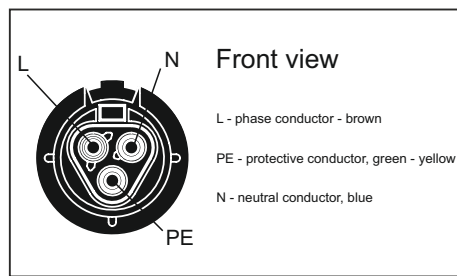
3. Connect the 3 core cable to the power supply (Class I.).



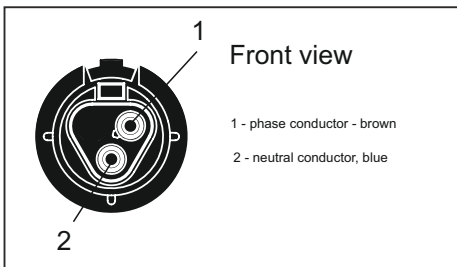
4. Connect the 2 core cable to the power supply (Class II.).



5. Connect the 3 pin connector Gesis to the power supply (Class I.).

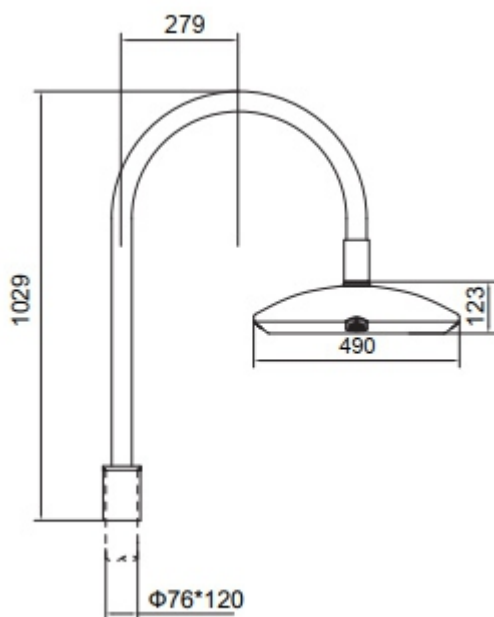





6. Connect the 2 pin connector Gesis to the power supply (Class II.).



7. Fix the luminaire on the outrigger installation.  
Tighten allen screws with tightening torque of 8 Nm.





- Recommended installation height up to 6 meters.
- If the external flexible cable or cord of this luminaire is damaged, it shall be exclusively replaced by the manufacturer or his service agent or a similar qualified person in order to avoid a hazard.
- The light sources in this luminaire is only replaceable by the manufacturer or their technicians or a qualified person.
- **Caution, risk of electric shock** 
- Do not look directly or with optical aids into the light source RG1 d > 0,5 m 
- This luminaire operates at mains voltage 220-240V, 50-60 Hz.
- Any modification to this luminaire is forbidden.
- Replace any cracked protective shield. 

#### Cleaning:

clean the luminaire with the standard detergents. DO NOT use any abrasive detergents or solvents.

#### Installation and maintenance:

can provide only a person with an electrical qualification.

**ELEKTRO-LUMEN, s. r. o.**  
 Hranická 505  
 753 61 Hranice IV - Drahotuše  
 Česká republika

**Telefon:** +420 581 699 411  
**Fax:** +420 581 699 419  
**E-mail:** el-lumen@el-lumen.cz  
**Web:** www.el-lumen.cz



The company reserves the right to change technical data and printing errors.  
 Copyright © ELEKTRO-LUMEN, s. r. o.